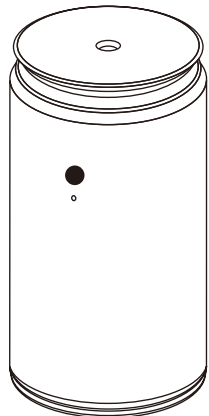


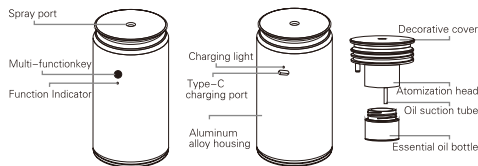
User Manual

AROMA DIFFUSER



Welcome to buy our products, in order to use correctly please read this manual in detail.

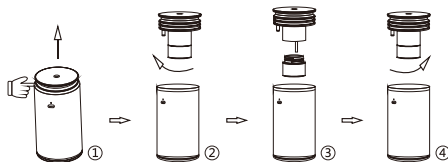
Product Appearance



Product Parameter

Product Dimension: 70*70*130mm
 Material: Aluminum alloy+ Anti-corrosion PP
 Input voltage/current: DC5V / 0.5A
 Output voltage/power: DC3V / 1.5W
 Battery capacity: 500mah
 Charging port: Type-C
 N.W/G.W: 0.34kg / 0.39kg
 Inner box size: 74*74*150mm
 Shipping Package: 25 sets/box 10kg/box
 Working principle: Two-fluid atomization technology + intelligent microcomputer control
 Product accessories: intelligent aroma diffuser * 1 unit;
 Type-C cable * 1pcs; User manual * 1pcs

Essential oil replacement



- ① Hold the body with one hand and grab the atomization head with the other hand;
- ② Extract the atomization head upward (do not flip it over to prevent the liquid from leaking out);
- ③ Turn the bottle counterclockwise and pour in the essential oil;
- ④ Turn the essential oil bottle clockwise into the atomization head.

Operation Instruction

▶▶ 【 Power on / Power off 】

- Long press the button for 2.5 seconds (the blue light is on twice), enter the home mode and turn on the red light (the red light keeps flashing).
- Long press the button 2.5 seconds (red light flashes twice) to prompt shutdown.
- ◆ The device shuts down automatically 4 hours after startup.

▶▶ 【 Operation Setting 】

- Switching the working gear with a click of a button in the working state of the device (1 > 2 > 3 > 1 > 2 > 3 By this loop)
- ◆ Red light on: work for 5 seconds ,then stop after 180 seconds (defaults to the operating position when last switched off)
- ◆ Blue light on: work for 10 seconds ,then stop after 180 seconds
- ◆ Green light on: work for 15 seconds, then stop after 180 seconds

▶▶ 【 Charging indicator 】

- ◆ In charging: red light on
- ◆ Fully charged: blue light on
- ◆ When the battery voltage is less than 2.8V, the red light flashes to indicate automatic switch-off.

Device Cleaning

The device needs to be cleaned when the following conditions occurs:

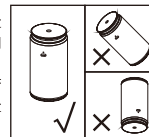
- 1、 You are ready to change to another essential oil for use.
- 2、 Atomization volume is getting smaller.

Cleaning steps:

- 1、 Pull out the nebulising head and twist off the essential oil bottle.
- 2、 Pour an appropriate amount of industrial alcohol into the bottle, then start the device to spray for 5-10 minutes to prevent other flavours from mixing in.
- 3、 Wait for the bottle to dry and finish cleaning.

Warning

- 1、 Please keep the device upright, tilting it > 60 degrees or turning it over will cause oil leaks and damage to the device.
- 2、 Do not dismantle/repair the machine if you are not a professional, please contact us in time if the machine breaks down.



Fault resolution

Fault Description	Resolution
No atomization	① Check for power or energisation. ② Check if the air pump is working. ③ Check if the air pipe is broken or off. ④ Check if the atomization core is loose or blocked.
Small atomization volume	① Check if the battery capacity is too low ② Check if the air pump is abnormal. ③ Check if the air pipe is loose or broken. ④ Check if the atomization core is loose or blocked.
Oil leakage	① Check if the flat washer is deformed or broken ② Check if the atomization head is broken.
Abnormal noise	① Check if the air pump is loose ② Check if the air pump is damaged.

Caution

- 1、 Do not touch the product under high temperature exposure to prevent scalding.
- 2、 The temperature inside the car under the sun is greater than 100 degrees, please turn off the device timely to prevent accidents when you left the car.
- 3、 To ensure the effect of use, please refill aromatherapy liquid in time.
- 4、 Please keep the essential oil sealed and away from sunlight before use.
- 5、 Avoid dripping onto oil-based paint/leather/fabric surfaces in case of corrosion damage.
- 6、 Keep out of direct contact with children to avoid accidental ingestion.
- 7、 If contact with skin or eyes accidentally, please flush with water or seek medical attention promptly.
- 8、 This product is not waterproof, please do not get wet or splash water.

We reserve the right to change and upgrade our products without prior notice to customers.