

Mobile APP

User Manual



Please read the user manual carefully before using this to fully understand how to operate quickly. If you have any questions, please contact our company, and we will strive to provide you with excellent service.

· Download and install the APP

- ISO users can search for “Scentra Aromatic” in the Apple store scroll down to find the Scentra Aromatic App and install.
- Android users can search for “Scentra Aromatic” in Google Play scroll down to find the Scentra Aromatic App and install.
- All smartphones can scan the QR code and follow the prompts to download and install the program.

Searching for “Scentra Aromatic”

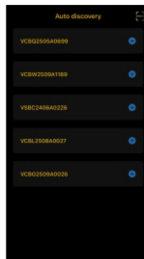


Android



Apple

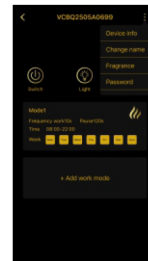
On the mobile home screen, click “Scentra Aromatic” to enter the app.
Make sure your Bluetooth is turned on.



From the search list, select the corresponding device and click to connect, then wait for the Bluetooth connection to complete.

· After successful pairing, you will enter the device settings page.

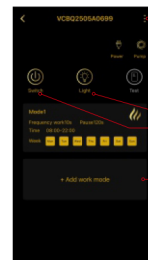
Note: Keep your phone's Bluetooth and location enabled, and stay within a 20 foot unobstructed range of the fragrance device.



· Device Settings Instructions

Click the “ ” button in the upper right corner to open the settings menu.

- Device Info: View the serial number of this device.
- Device Name: Modify the device name for easier identification in different areas, such as living room or game room.
- Fragrance Type: Modify the current diffuser oil name.
- Change Password: Set a 4-digit Bluetooth password.



· Device Detail Page Instructions

- Test Mode: Click to activate the air pump for 5 seconds.

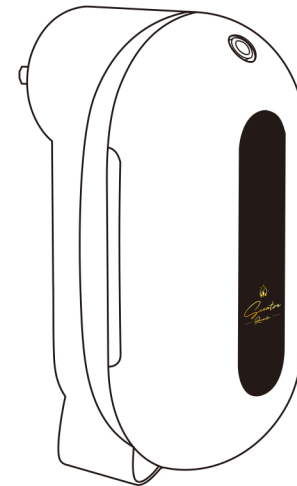
· Work Mode Parameter Settings

Click “work Mode” to set up 5 timers.

- Day Settings: Choose the days of the week for operation.
- Time Settings: Set the device's start and end times.
 - ① The start time must be earlier than the end time.
 - ② If the fragrance program is meant to cover midnight(00:00), two programs must be set: the first up to 23:59 and the second from 00:00.
- Frequency Settings: Adjust the fragrance spray frequency by setting spraytime(seconds) and pause time (seconds).
- After entering the work mode settings, click “Save” to complete the setup.

Scentra Aromatic

Scent Machine Product instruction manual

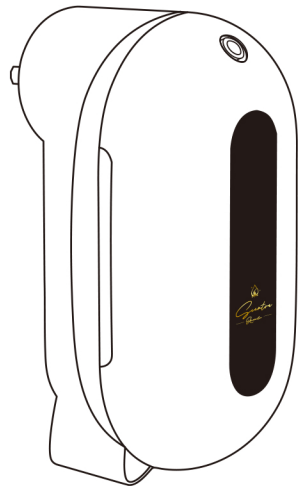


Thank you sincerely for purchasing the products of our company
Please keep the instruction manual properly after reading
for easy reference at any time.

Scentra Aromatic

Scent Machine

Product instruction manual



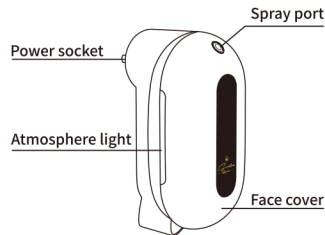
Thank you sincerely for purchasing the products of our company
Please keep the instruction manual properly after reading
for easy reference at any time.

• Precautions

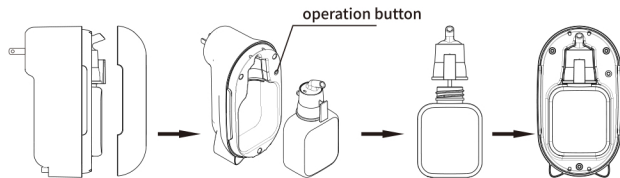
- 1.After installation, please keep the machine vertical and do not invert, tilt or flip the equipment to avoid oil leakage and damage to the machine.
- 2.Do not use overloaded sockets. If used, it may endanger your safety and may cause a fire.
- 3.Please do not try to open the machine shell to avoid damage to the machine. If you are not a technician, you may not modify, disassemble or repair the machine.If the use of the machine is abnormal, please consult sales and after-sales service in time.
- 4.When the machine is working, do not disassemble the equipment or shake the equipment vigorously, which will cause the machine to work abnormally.
- 5.Do not place the machine in water or drench it with water.
- 6.When encountering thunder in natural weather, do not operate the machine to avoid the risk of electric shock.

• Product parameters

Product size: L88*106W*H157mm
Coverage:40-50m² / 120-150m³
Essential oil capacity: 120ml
Voltage: 5V
Rated power: 1.5W
Product weight: 0.37kg



• Operation instructions



1. Open the machine cover;
2. Take out the essential oil bottle, rotate counterclockwise to open the atomizing head and the essential oil bottle, add essential oil to the essential oil bottle, tighten it clockwise, and install it on the machine.;
3. Connect to the power supply and set the working time of the machine;
4. Close the upper cover and the machine will work according to the set time.

• Packaging accessories



• Equipment maintenance

In order to ensure the best aroma effect, customers are requested to inspect and maintain the machine regularly, as follows:
1. Open the lid of the machine and take out the used essential oil bottle;
2. Every time you change the essential oil, you need to clean the essential oil and filter it. ;
3. Pour an appropriate amount of alcohol into the essential oil bottle and clean it. ;
4. After the sorting is completed, pour a small amount of alcohol, install it on the machine, and turn on the machine to work for 5 to 10 minutes.
(Maintenance once every six months, or when you need to replace a new fragrance, and when you find that the fragrance is getting lighter and lighter)

• Troubleshooting

Problem failure	Solution
The equipment is not working	①Check whether the power supply is powered on. ②Check the working time of the machine.
No atomization	①Check whether the air pump is working and whether the atomization core is clogged; ②Check whether the tracheal sealing ring is damaged or falling off. ③Check whether the oil suction pipe is clogged or falling off.
Small atomization	① Check whether the sealing ring of the air outlet pipe is damaged. ②Check whether the atomizing nozzle is clogged. ③Check whether the cooperation between the atomizing core and the atomizing nozzle is loose.
Abnormal noise	①Check whether the atomizing head is damaged. ②Check whether the gasket is damaged and needs to be replaced. ③Check whether the essential oil bottle and the atomizing head are tightened in parallel.
Oil leakage	① Check whether the air pump is loose and fix it again. ②Check whether the air pump is damaged and replace it with a new air pump.

• After-sales service

The equipment will be guaranteed within one year from the date of sale, but the shell, wires and other vulnerable objects will not be guaranteed. Damage caused by man-made or accidental is not covered by the warranty.

• Warning

Risk of Oil Leakage & Damage

- * Avoid contact with skin, eyes, clothing, or surfaces.
- * Keep out of reach of children and pets.
- * Always wear gloves and safety goggles when handling oils or refilling.
- * Use only as directed and with compatible diffuser machines.
- * Ensure the diffuser is placed on a stable, protected surface away from heat sources and electrical components.
- * Place a protective mat or tray under the machine to prevent stains or damage from possible leaks or spills.
- * Wipe any oil spills immediately to avoid slipping or surface discoloration.
- * Do not inhale oil directly or use in confined, unventilated spaces.
- * Disconnect the diffuser from power before refilling or cleaning.
- * The manufacturer is not responsible for any injury, staining, or property damage caused by leakage, incorrect installation, or misuse

• Flammability Notice

Our fragrance oils are carefully crafted for use with scent diffusers.
As with all aromatic oils, please keep away from open flames and excessive heat.
Store in a cool, dry place, away from direct sunlight. Use only as directed and enjoy your fragrance experience safely.

By Scentra Aromatic.