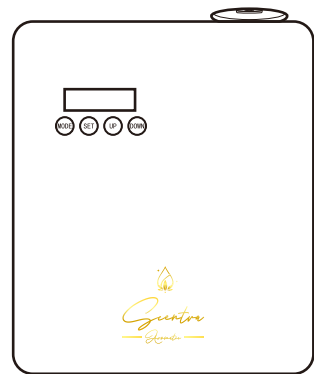


Scentra Aromatic

Scent Machine Product instruction manual

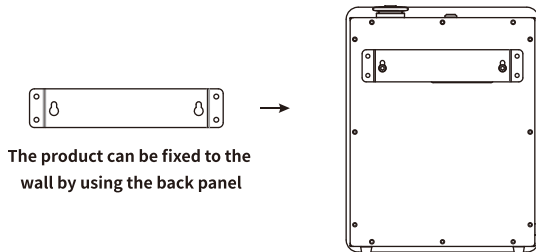


Thank you sincerely for purchasing the products of our company
Please keep the instruction manual properly after reading
for easy reference at any time.

Please read this manual carefully before using the product and keep it safe.

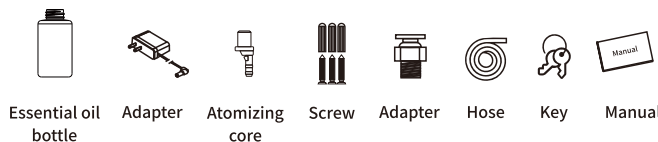
▲ Precautions

- 1.After installation, please keep the machine vertical and do not invert, tilt or flip the equipment to avoid oil leakage and damage to the machine.
- 2.Do not use overloaded sockets. If used, it may endanger your safety and may cause a fire.
- 3.Please do not try to open the machine shell to avoid damage to the machine. If you are not a technician, you may not modify, disassemble or repair the machine.If the use of the machine is abnormal, please consult sales and after-sales service in time.
- 4.When the machine is working, do not disassemble the equipment or shake the equipment vigorously, which will cause the machine to work abnormally.
- 5.Do not place the machine in water or drench it with water.
- 6.When encountering thunder in natural weather, do not operate the machine to avoid the risk of electric shock.

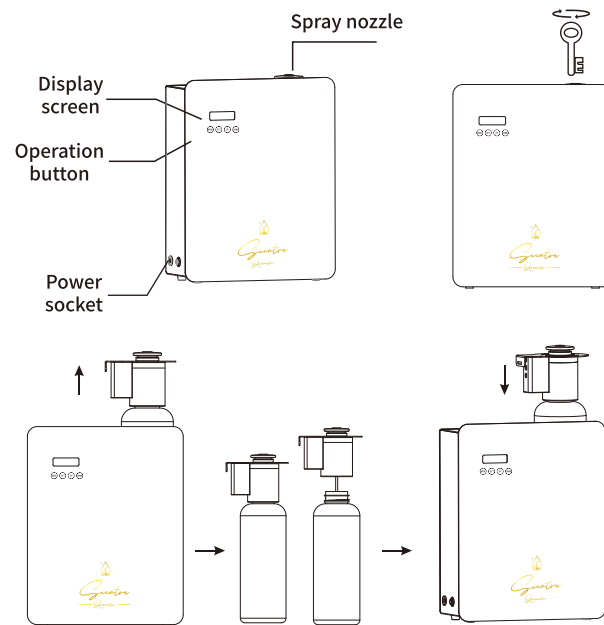


The product can be fixed to the wall by using the back panel

• Packaging accessories



• Operation instructions



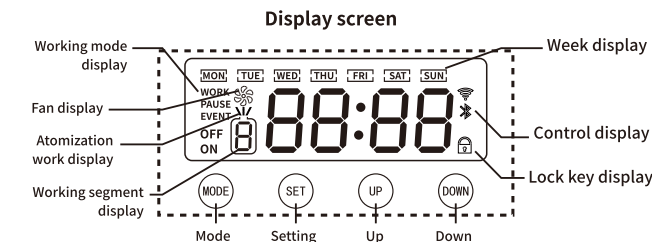
1. Use the key to unlock;
2. Remove the atomization head, open the atomization head and essential oil bottle;
3. Add essential oil to the bottle and install it on the machine;
4. Connect the power supply, set the machine working time, and the machine will work according to the set time.

• Setup

◆ boot up:

Connect to the power adapter, insert one end of the power adapter into the machine's dc power accesshole [dc power in] plug, and one end into a power socket. At this time, the machine's lcd screen displays the operating status of the system machine.
[on/off]: the display of on means that the machine is in the running time period, and the display of off means that it is not in the time period.
[work/pause]: displaying work means that the machine is in a working state, and displaying pause means that the machine is in a paused state.

◆ Detailed description of key functions:



The machine settings allow 5 running periods, and the working day of the machine can be selected according to multiple options.

[MODE]: Switch between different page options, including system time, first time period start time, first time period stop time, fragrance concentration. The start time of the second time period, the stop time of the second time period, and the fragrance concentration, The start time of the third time period, the stop time of the third time period, and the fragrance concentration. The start time of the fourth time period, the stop time of the fourth time period, and the fragrance concentration. The start time of the fifth time period, the stop time of the fifth time period, and the fragrance concentration.
[SET]: Enter the setting state, you can skip the setting content of the current page: including time, date, concentration, etc.

[UP]: Adjust upwards to adjust the current time period data, fragrance data, and work date selection.
[DOWN]: Adjust downward to adjust the current time period data, fragrance data, and work date selection.

◆ Equipment running time and adjustment of fragrance concentration

◆ Set the system time

Adjust the equipment time to be consistent with your local time. The system time is on a 24-hour basis, The system time uses military time.
Press the [SET] button for the FIRST time: the hour number of the time period flashes, and press [UP/DOWN] to adjust the HOUR.
Press the [SET] BUTTON for THE SECOND time: the hour is set, the number of minutes flashes, the score is set, and press [UP/DOWN] to adjust.
Press the [SET] button for the THIRD time: the number of minutes is adjusted, the current working day beats, set the working day, and press [UP/DOWN] to adjust.
Press the [SET] button for the fourth time: confirm that the system time is set.

◆ How to set the operational period and frequency manually without mobile App

Press the [MODE] button for the first time: [EVENT 1 ON] is displayed on the LCD screen. Press [SET] for the starttime of the first period. The number of hours flashes, adjust the number of hours through [UP/DOWN], press [SET] for the second time, the number of minutes flashes, and adjust the score through [UP/DOWN], press [SET] the working day number for the third time to flash, and adjust the working day through [UP/DOWN].
(Note: each time period can only select the week in the open time period)

Press the [MODE] button for the second time: the LCD screen displays the end time of the first time period of [EVENT 1 OFF], press the [SET] button to enter the adjustment, and adjust the hours and minutes through [UP/DOWN].

Press the [MODE] button for the third time: [SCENT/WORK] is displayed on the lcd screen to set the working time of the machine for each fragrance spraying cycle. from 10 seconds-300, you can adjust it for 5 second at a time through [UP/DOWN].

Press the [MODE] button for the fourth time: [SCENE/PAUSE] is displayed on the LCD screen to set the machine pause time for each cycle from 10 seconds-300. Press [UP/DOWN] to adjust it for 5 seconds at a time, and continue to press the [MODE] button until all 5 time periods are set.

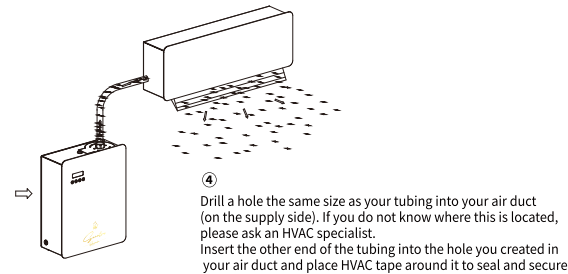
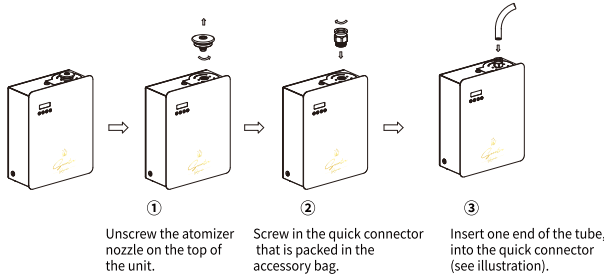
- ① (the functions of the 2nd, 3rd, 4th, and 5th time periods are the same as the first time period)
- ② (when the running time is set, the shutdown time must not precede the boot time. if the running time needs to span 00:00, two time periods need to be set separately)
- ③ if you do not need to set a separate time period, after the first time period is set, press the [MODE] key to directly enter the [SCENT/WORK] mode.

Press and hold the [SET] button for 5 seconds, and the display screen appears [] to indicate that the button is locked. Press and hold the [SET] button for 5 seconds to unlock the display screen to display the main interface. Press and hold [DOWN] for 5 seconds, the display [] appears to indicate that the fan is on, press and hold [DOWN] for 5 seconds, the display [] disappears to indicate that the fan is off.

◆ Restore factory settings

Press and hold the [MODE] button for about 5 seconds to restore the factory settings. The factory setting mode is: work every day, working period 08:00-22:00, work for 60 seconds, pause for 30 seconds.

· How to use with your HVAC unit



⚠ Precautions

- Place diffuser as close as you can to the HVAC unit. You want to use the least amount of tubing as possible between the diffuser and HVAC unit for maximum scenting capabilities. Make sure tubing is as straight as possible when inserting into HVAC unit. Any large curves or bends will cause the oil to accumulate in the tube and lessen the scent.
- A wall bracket is included with your diffuser and might be necessary to use if you do not have a place to sit the diffuser.
- Fill bottle with your choice of diffusing oil and plug into a power outlet.
- Now you are ready to program your machine.
- See instruction manual on how to program manually or with our mobile app.

· Download and install the APP

- ISO users can search for “Scentra Aromatic” in the Apple store scroll down to find the Scentra Aromatic App and install.
- Android users can search for “Scentra Aromatic” in Google Play scroll down to find the Scentra Aromatic App and install.
- All smartphones can scan the QR code and follow the prompts to download and install the program.

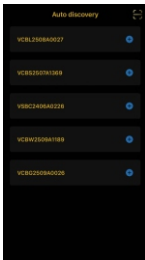


Android



Apple

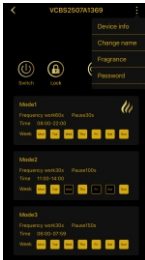
On the mobile home screen, click “Scentra Aromatic” to enter the app.
Make sure your Bluetooth is turned on.



From the search list, select the corresponding device and click to connect, then wait for the Bluetooth connection to complete.

· After successful pairing, you will enter the device settings page.

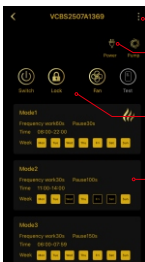
Note: Keep your phone's Bluetooth and location enabled, and stay within a 20 foot unobstructed range of the fragrance device.



· Device Settings Instructions

Click the “ ” button in the upper right corner to open the settings menu.

- Device Info: View the serial number of this device.
- Device Name: Modify the device name for easier identification in different areas, such as living room or game room.
- Fragrance Type: Modify the current diffuser oil name.
- Change Password: Set a 4-digit Bluetooth password.



Settings Button

Power mode display
Air Pump status display

Device/Fan/Screen
Lock Toggle Button

Set work mode

· Device Detail Page Instructions

- Power Mode: Displays the current power mode.
- Device on/off: Turn the device on or off.
- Fan on/off: Turn fan on or off.
- Screen Lock: Enable or disable the screen lock function.
- Test Mode: Click to activate the air pump and for 5 seconds.

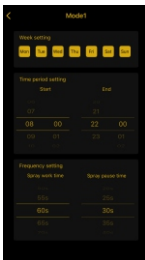
· Work Mode Parameter Settings

Click “work Mode” to set up 5 timers.

- Day Settings: Choose the days of the week for operation.
- Time Settings: Set the device's start and end times.

①The start time must be earlier than the end time.
②If the fragrance program is meant to cover midnight(00:00), two programs must be set: the first up to 23:59 and the second from 00:00.

- Frequency Settings: Adjust the fragrance spray frequency by setting spraytime(seconds) and pause time (seconds).
- After entering the work mode settings, click “Save” to complete the setup.



· Equipment maintenance

In order to ensure the best aroma effect, customers are requested to inspect and maintain the machine regularly, as follows:

1. Open the lid of the machine and take out the used essential oil bottle;
 2. Every time you change the essential oil, you need to clean the essential oil and filter it.;
 3. Pour an appropriate amount of alcohol into the essential oil bottle and clean it.;
 4. After the sorting is completed, pour a small amount of alcohol, install it on the machine, and turn on the machine to work for 5 to 10 minutes.
- (Maintenance once every six months, or when you need to replace a new fragrance, and when you find that the fragrance is getting lighter and lighter)

· Troubleshooting

Problem failure	Solution
The equipment is not working	①Check whether the power supply is powered on. ②Check whether the wrong power supply is used. ③Check the working time of the machine settings.
No atomization	①Check the color of the machine indicator light. ②Check whether the air pump is working and whether the atomizing core is clogged. ③Check whether the tracheal sealing ring is damaged or falling off. ④Check whether the oil suction pipe is clogged or falling off.
Small atomization	① Check whether the sealing ring of the air outlet pipe is damaged. ② Check whether the atomizing nozzle is clogged. ③Check whether the cooperation between the atomizing core and the atomizing nozzle is loose
Abnormal noise	① Check whether the atomizing head is damaged. ②Check whether the gasket is damaged and needs to be replaced. ③Check whether the essential oil bottle and the atomizing head are tightened in parallel.
Oil leakage	① Check whether the air pump is loose and fix it again. ②Check whether the air pump is damaged and replace it with a new air pump.

· After-sales service

The equipment will be guaranteed within one year from the date of sale, but the shell, wires and other vulnerable objects will not be guaranteed. Damage caused by man-made or accidental is not covered by the warranty.

· Warning

Risk of Oil Leakage & Damage

- * Avoid contact with skin, eyes, clothing, or surfaces.
- * Keep out of reach of children and pets.
- * Always wear gloves and safety goggles when handling oils or refilling.
- * Use only as directed and with compatible diffuser machines.
- * Ensure the diffuser is placed on a stable, protected surface away from heat sources and electrical components.
- * Place a protective mat or tray under the machine to prevent stains or damage from possible leaks or spills.
- * Wipe any oil spills immediately to avoid slipping or surface discoloration.
- * Do not inhale oil directly or use in confined, unventilated spaces.
- * Disconnect the diffuser from power before refilling or cleaning.
- * The manufacturer is not responsible for any injury, staining, or property damage caused by leakage, incorrect installation, or misuse.

· Flammability Notice

Our fragrance oils are carefully crafted for use with scent diffusers. As with all aromatic oils, please keep away from open flames and excessive heat. Store in a cool, dry place, away from direct sunlight. Use only as directed and enjoy your fragrance experience safely.

By Scentra Aromatic.

